

2022

ANNUAL REPORT



CHAMBER *of* COMMERCE
EASTERN CONNECTICUT

Dear Chamber Members,

2022 has been a year of growth, learning, and change. We expanded our network by nearly 100 new members through a strategic membership drive, convened community leaders at dozens of engaging events, and offered impactful programs to foster economic and professional development. Cautiously optimistic that the pandemic is in our rear-view mirror, we introduced 5 talented new staff members, and are fully back to our operating team of 12.

We applied for and received state funding which, leveraged with private funding, allowed us to purchase 92 Eugene O'Neill Drive in New London to develop a state-of-the-art regional Innovation Center and co-working facility. As I write this letter, the Center is under renovation, and we look forward to its expected opening in June. As you'll see on page 14, the Center will provide the space, tools, and programming needed for businesses to succeed. The Chamber will be both a tenant and a resource, sharing space with entrepreneurs and professionals of all industries, interests, and backgrounds.

In addition to our existing responsibilities supporting our members, the Chamber, with the support of Wesleyan University professor Dr. Rosemary Ostfeld, developed and launched our first Entrepreneur Academy (page 8), intended to be a cornerstone program of the future Innovation Center. Our goal was to enroll 10 local entrepreneurs; to our delight and encouragement, 42 participants enrolled, all eager to follow their small business dreams.

Other notable activities during 2022 are the Chamber's administrative management of the Eastern Regional Tourism District (ERTD) and the Southeastern CT World Affairs Council (SECWAC). These organizations and existing regional businesses play an important role in maintaining the economic security and quality of life of the region.

ERTD, administered by the Chamber and funded by the State, experienced significant growth in 2022, including a rebranding effort with the CT Office of Tourism. Following months of discussions, district leadership created three destinations that comprise the 41-town Eastern Connecticut footprint: Scenic Northeast, Greater New London/Norwich, and Mystic Country. ERTD's Regional Tourism Marketing Partnership Program, which has received compliments statewide, awarded \$50,000 in 1:1 matching funds to tourism entities engaged in collaborative marketing, infusing a total of \$100,000 into eastern Connecticut's tourism economy (page 17).

Supporting the business community since March 31st 1910, 113 years, the Chamber has a network of over 1,400 members spanning 42 towns and beyond, encompassing diverse organizations including major corporations, sole proprietors, and civic organizations. The Chamber executes 150 programs and events in a typical year, including Leadership Eastern CT for over 35 years, Citizen of the Year award for over 70 years, and the region's leading Young Professionals initiative.

We are immensely proud of the work we do in support of local business interests and economic development. We have enjoyed great success during 2022, which would not be possible without the support and encouragement of our Board of Directors, Regional Benefactors, our dedicated staff, and most importantly you, our members. Thank You.



Tony Sheridan
President and CEO



Mary Ellen Jukoski
Board Chair

5 Board of Directors & Staff

6 Membership

8 Programs & Events

12 Marketing

14 Regional Innovation Center

16 Partnerships

19 Chamber Foundation

20 Financials

The Mission of the Chamber of Commerce of Eastern Connecticut, Inc. is to create and maintain a positive business climate that meets the needs of our members by supporting economic development and growth in the region.

2022 BOARD OF DIRECTORS

CHAIR

Dr. Mary Ellen Jukoski
Three Rivers Community College

VICE CHAIR

Patrick Greene
Lawrence + Memorial Healthcare/
Yale New Haven Health

VICE CHAIR

Anthony Joyce
Chelsea Groton Bank

TREASURER

Jennifer Granger
UCFS Healthcare

LEGAL COUNSEL

Jeffrey Godley
Brown Jacobson, P.C.

SECRETARY

Heather Roberts
Diamond Team at Norcom Mortgage

PRESIDENT

Tony Sheridan
Chamber of Commerce of Eastern
CT

Tai Au

Pink Basil, Spice Club, Samurai
Noodle Bar + Grill

Michael Ausere
Eversource

Charles Bunnell
The Mohegan Tribe

Eric Callahan
Suisman Shapiro Attorneys-at-Law

Dr. Stephen Coan
Mystic Aquarium

Marguerite Driscoll
Pfizer, Inc.

Katherine Ericson
LEARN

Donna Handley
Backus and Windham Hospitals/
Hartford HealthCare

Anna Lathrop
Gourmet Galley Catering

Dave Meisinger
Connecticut Municipal Electric
Energy Company (CMEEC)

Stan Mickus
Cross Sound Ferry

Courtney Murphy
General Dynamics Electric Boat

Brian Orenstein
Charter Oak Federal Credit Union

Jean Swift
Mashantucket Pequot Tribal Nation

STAFF

Tony Sheridan
President and CEO

Megan Gilbert
Vice President

Ciera Alston
Administrative Assistant

Emily Brannigan Wilkins
Creative Manager

Jane Davis
Director of Membership &
Engagement

Kathryn Flannigan
Marketing & Event Coordinator

Joelle Garrett
Business Services Representative

Rachel Lenda
Administrative Partnerships
Manager

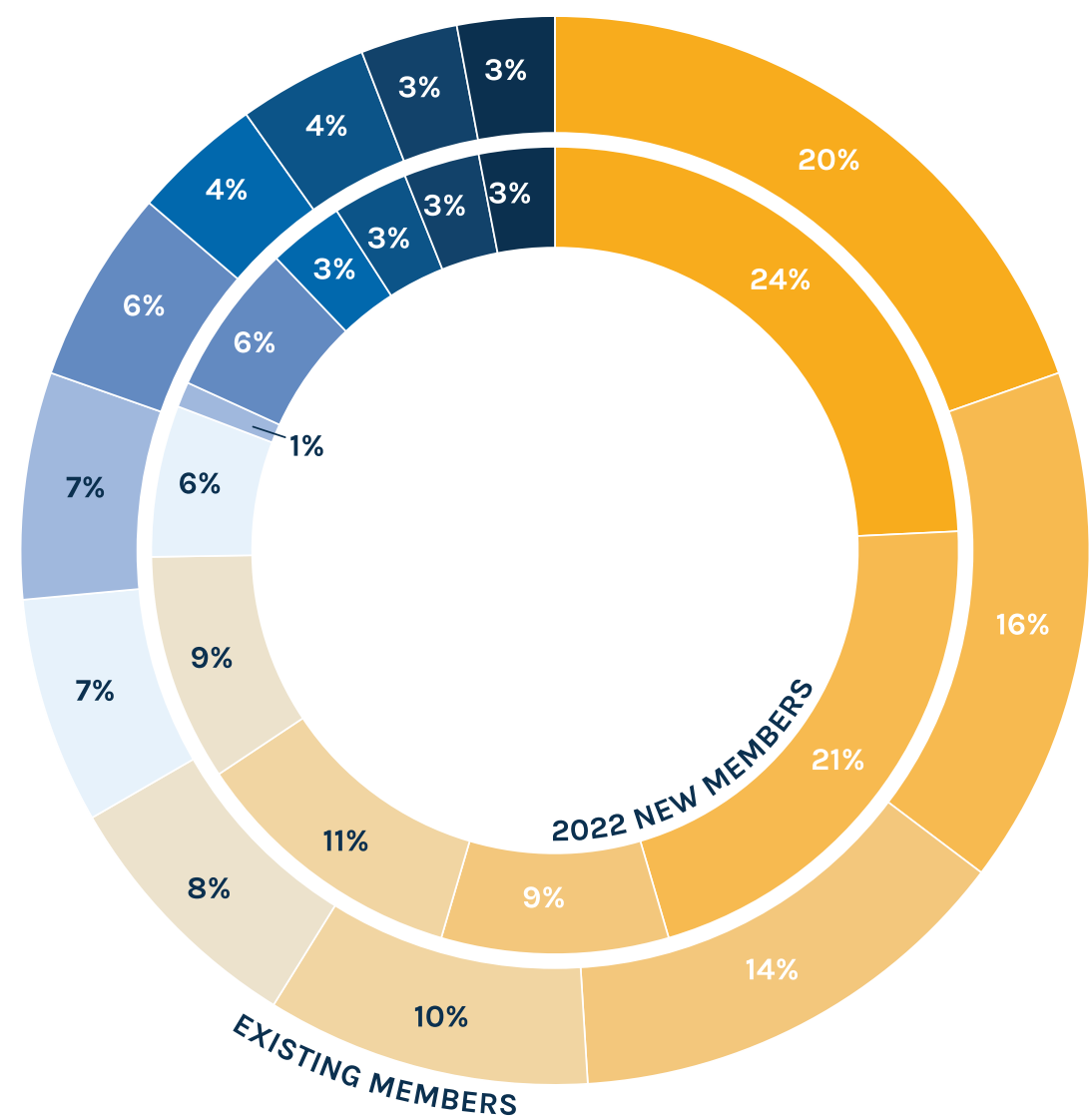
Shöna Nilsson
Program & Event Manager

Joshua Posey
Business Development &
Operations Manager, Innovation
Center

Gary Rogers
Director of Strategic Projects

Lori Thompson
Office Manager

The Chamber welcomed two “junior associates” in 2022: Vivian E. Lenda, born March 15, 2022, and Samuel A. Gilbert, born April 16, 2022.



MEMBERSHIP BY REGION

Region	Existing	New
<div></div> Groton, Mystic, or Stonington	20%	24%
<div></div> New London	16%	21%
<div></div> Greater Norwich	14%	9%
<div></div> Waterford	10%	11%
<div></div> East Lyme, Old Lyme, or Lyme	8%	9%
<div></div> Ledyard, Mashantucket, or North Stonington	7%	6%
<div></div> Hartford County	7%	1%
<div></div> Colchester, Salem, or Montville	6%	6%
<div></div> Windham County	4%	3%
<div></div> Other Counties: Tolland, New Haven, Fairfield	4%	3%
<div></div> Middlesex County	3%	3%
<div></div> RI, NY, MA & Other States	3%	3%

TOP 5 MEMBER CATEGORIES

1. Finance & Insurance
2. Family, Community & Civic Organizations
3. Food & Beverage
4. Health & Wellness
5. Government & Military

TOP 5 NEW MEMBER CATEGORIES

1. Health & Wellness
2. Food & Beverage
3. Business & Professional Services
4. Shopping & Retail
5. Family, Community & Civic Organizations

1 NEW REGIONAL BENEFACTOR



Cashman Dredging & Marine Contracting Co., LLC is a leading national and international provider of dredging services. Having completed many complicated projects, including the largest environmental remediation dredging project in U.S. history, Cashman Co. is known for providing innovative dredging and engineering solutions that strengthen local economies, improve communities, and uphold key organizational values: integrity, accountability, safety, and environmental conservation.

Find all our Regional Benefactors on the back cover.

80%
of our members are
small businesses
(employing 100 or fewer people)

Our total membership employs over
84,000 people
in Connecticut and beyond.

MEMBER COUNCILS

Human Resources Council

Re-formed in 2022, this council creates an open forum for HR professionals to connect, share, and develop resources and best practices for recruiting and retaining an engaged and inclusive workforce.

2022 Council Chairs:

Katie Russo, Waterford Hotel Group
Laura Randazzo, Creative Services. Inc.

Energy Council

Formed in 2022, this council connects industry professionals across the region’s portfolio of energy generation/distribution assets, to advocate for economic development opportunities including supply chain diversification, inclusive workforce training, and reasonable decarbonization efforts.

Military Affairs Council

Meets once monthly to discuss how the Chamber and its members can become more involved with the area’s military community, and plans annual and monthly programs.

2022 Council Chairs

Dara Wicken, Navy Federal Credit Union
Angie Clay, Navy Federal Credit Union

Education Council

Maintains a working connection between local businesses and our region’s schools and students to prepare our workforce for their future careers, through initiatives such as job shadowing and career panel discussions.

2022 Council Chairs

Erin Sullivan, Three Rivers Community College
Alyson Woznicki, Waterford High School

Legislative Affairs Council

Committee members meet to discuss legislative needs and proposals of concern to the region and the membership. The Chamber monitors state and federal bills through a powerful software tool, and reports updates and opportunities to mobilize in support or opposition.

2022 Council Chairs:

Chuck Bunnell, The Mohegan Tribe
Stan Mickus, Cross Sound Ferry

ENTREPRENEUR ACADEMY

In July of 2022, the Chamber launched the pilot program of Entrepreneur Academy, thanks to a grant provided by the Thames River Innovation Place (TRIP) and CTNext

The Academy featured a 90-minute course one evening a week from July 14 to August 30, with a final product presentation on September 9 at the Thames Club in New London.

Sessions included topics such as: creating a minimum viable product, pitching your idea,

basic marketing, product branding, access to capital, basic accounting/bookkeeping, basic legal requirements, state resources, leadership, goal setting, and more.

A total of 42 participants enrolled in the academy. On the final day, three winners were voted on by peers as the most viable services to launch. Winners received \$250 towards the launch of their company.

SERVICE PERSON OF THE MONTH



ME3 Gregory Stanzione of USCG accepts SPOM award.

Service Person of the Month recognizes outstanding enlisted personnel stationed in Southeastern Connecticut, who have made noteworthy community service contributions while excelling in their military duties. SPOM is led by the Chamber’s Military Affairs Council with support from the U.S. Navy, U.S. Coast Guard, CT National Guard, and local service clubs and civic organizations. SPOM awardees are honored at events sponsored by one of the local clubs or organizations. The program was re-established in 2022 after a hiatus due to the pandemic.

2022 AWARDEES

- Christopher Cobb ND1 (DSW/EXW) NSMRL
- Jeremy A. Vallon MMA2(SS) USN
- Gabriel William Muscella MMN1(SS) USN
- Gregory Stanzione ME3 USCG
- John F. Gordy HM1 USN

YOUNG PROFESSIONALS



YPs enjoy themselves at Beer'd Brewing - The Silos.

Young Professionals of Eastern CT, targeted to early-career professionals generally 40 and under, has been designed to offer flexible opportunities to engage professionally, connect socially, and build a lasting network.

YPECT saw a resurgence in 2022 serving 216 members across five different events held at: Beer'd Brewing – The Silo, Pinspiration, The Axe Lounge at SuperCharged, Inn at Mystic/Rocks 21, and Mystic Seaport, as well as community service outings.

LEADERSHIP EASTERN CT CLASS OF 2022

For over 35 years, Leadership Eastern CT has prepared future community leaders to assume positions of responsibility and take on challenges in the region. The class of 2022 demonstrated a keen sense of adaptability, determination, and resilience as the program was led in a hybrid format.

The class of 2022's project involved constructing an outdoor play area, complete with a playscape, for the children residing at Safe Futures’ Flora O’Neil Apartments as well as refurbishing the gardens for the adults residing at Flora O’Neil Apartments and Katie Blair House.



▲ Leadership class of 2022

◀ Class Co-President Wilmer Lambert working on the outdoor play area for Safe Futures’ Flora O’Neil Apartments.

- | | | |
|--|--|---|
| <p>Timothy Bunkelman, <i>Dominion Energy</i></p> <p>Luisanna Cabrera, <i>Chelsea Groton Bank</i></p> <p>Chris Chatman, <i>Dominion Energy</i></p> <p>Karen DelVecchio, <i>Pat Munger Construction Company, Inc.</i></p> <p>Steven Elci, <i>Homeless Hospitality Center</i></p> <p>Julie Gehring, <i>University of Connecticut- Avery Point & Werth Institute</i></p> <p>Eric Grunthaner, <i>Mystic Aquarium</i></p> <p>Rachael Guthrie, <i>TVCCA</i></p> | <p>Penni Harlow, <i>Chelsea Groton Bank</i></p> <p>Gina King, <i>TVCCA</i></p> <p>Wilmer Lambert, <i>General Dynamics Electric Boat, Class of 2022 Co-President</i></p> <p>Kaiser Leuze, <i>Mohegan Sun Casino, Class of 2022 Co-President</i></p> <p>Arlene Marcionette, <i>Mystic Seaport Museum</i></p> <p>Pulat Matyakubov, <i>CT Municipal Electric Energy Cooperative (CMEEC)</i></p> <p>Emily Perkins, <i>Hartford Healthcare</i></p> | <p>Mary Riley, <i>United Community & Family Services</i></p> <p>Miosotys Santiago, <i>Exemplify to Edify</i></p> <p>Mario Siciliano, <i>Chelsea Groton Bank</i></p> <p>Samuel Sweitzer, <i>Sweitzer Income Planning</i></p> <p>Cara-Lynn Turner, <i>Martin House, Inc.</i></p> <p>Brittany Uphold, <i>CorePlus Federal Credit Union</i></p> |
|--|--|---|



Diversity in Leadership Business Breakfast held at the Mashantucket Pequot Musuem.

KEY SPEAKERS:

- U.S. Senator Richard Blumenthal
- Chairman Rodney Butler
Mashantucket Pequot Tribal Nation
- U.S. Congressman Joe Courtney
- Dr. Tracy Espy
Mitchell College
- Dr. Elsa Nuñez
Eastern CT State University
- Ulysses Hammond
CT Port Authority
- Raja Mangipudy
Pfizer
- CT Attorney General William Tong



◀ Social Service Recognition Breakfast keynote speaker Tricia Cunningham, Executive Director, Always Home, Inc.

▶ Attorney General William Tong speaks on the topic of Cybersecurity at a Business Breakfast.

TOP ATTENDED EVENTS

1. Annual Meeting & ECTy Celebration
2. 11th Annual Military Appreciation Breakfast
3. 13th Annual Social Service Recognition Breakfast
4. 71st Annual Citizen of the Year Celebration
5. Diversity in Leadership Business Breakfast
6. Business Luncheon with Congressman Joe Courtney
7. Offshore Wind Update and Mini Expo



A member shakes Congressman Joe Courtney's hand after a luncheon.



2021 ECTy Winners pose with awards.



Citizen of the Year, Dr. John Burkhardt.



Military Appreciation award winners.



Social Service Appreciation award winners.

AWARD WINNERS

2021 REGIONAL CHAMBER AWARDS

Small Business of the Year:
Aces High RV Park

New Business Award:
Tin Peddler

Industry Innovator:
Healthy PlanEat

Community Revitalization Award:
Spark Makerspace

NonProfit of the Year:
UCFS Healthcare

Tourism Leader of the Year:
Mystic Aquarium

Best Place to Work:
Reliance Health

Dominion Clean Energy Award:
Bell Power

Business of the Year:
Antonino Auto Group

Volunteer of the Year:
Ornet Hines

Young Professionals of the Year:
Wilmer Lambert
Kaiser Leuze

Board of Directors Special Award:
General Dynamics Electric Boat

MILITARY APPRECIATION BREAKFAST

Military Community Support Award:
Dime Bank and UCFS Healthcare

SOCIAL SERVICE RECOGNITION BREAKFAST

Executive Director of the Year:
Kathy Allen, Thames River Community Service

Staff Member of the Year:
Rob Lawrence, Groton Community Meals

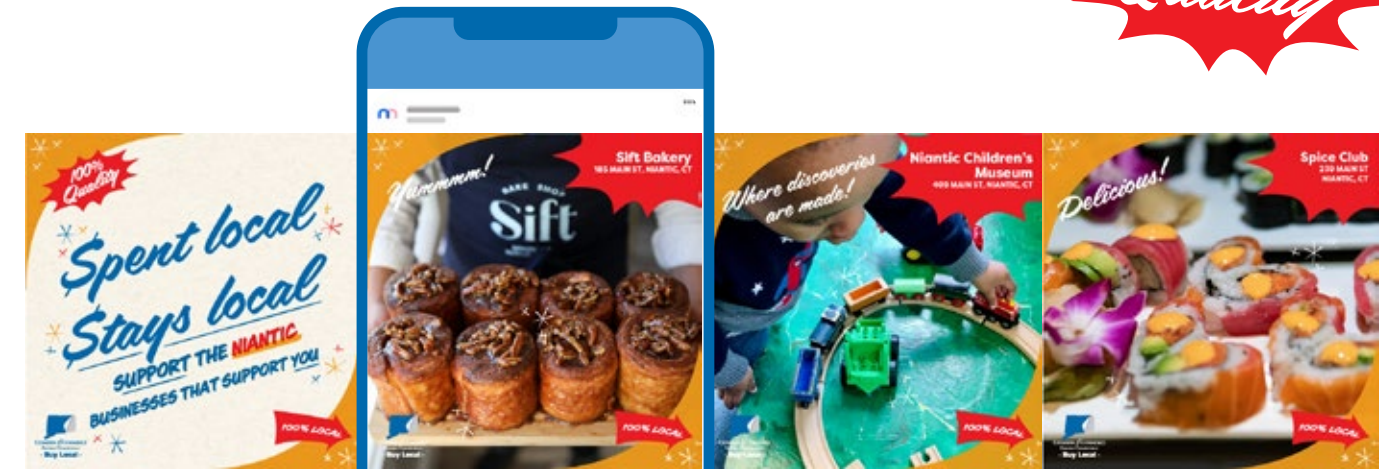
Volunteer of the Year:
Charlie Witt, United Way Southeastern CT

Board Member of the Year:
Ornet Hines

Collaboration of the Year:
Sound Community Services and New London Adult Education

Guided By Heart Presented by Sava Insurance:
Deborah Fountain, Brian Dagle Foundation

SPENT LOCAL STAYS LOCAL



Digital ads from Facebook and Instagram.

During the 2022 holiday season the Chamber created a new “Spent local, Stays local” campaign encouraging the community to ‘support the businesses that support you’. Ads were shared digitally on Facebook and Instagram, and in print through The Day. Members were featured in Mystic, Ledyard/Gales Ferry, Niantic, North Stonington, and Old Lyme. After the success of the campaign the Chamber intends to continue this campaign featuring different towns and members.



Half page ad printed in The Day.

100% LOCAL	Total Digital Reach	75,316
X	Total Digital Impressions	134,730

THE VOICE GOES DIGITAL

With a concerted effort to move towards more sustainable practices, the Chamber reintroduced our VOICE publication in a hybrid format.



The bi-monthly newsletter is now housed on our website for online readership. We also have print copies available at our many events for pickup.



@ChamberECT



15.5k followers
13.4k page likes
166k reach



2.9k followers
38k reach



1.4k followers
35k impressions



2.7k followers
5k impressions



TOP FACEBOOK POST:
Candy's Chapina Restaurant celebrated their Grand Opening and Ribbon Cutting ceremony on July 7th. The new restaurant features delicious Guatemalan food. They are located on Bank Street in the City of New London, Connecticut, and are officially open for business! Stop in to try their cuisine during Sailfest weekend!

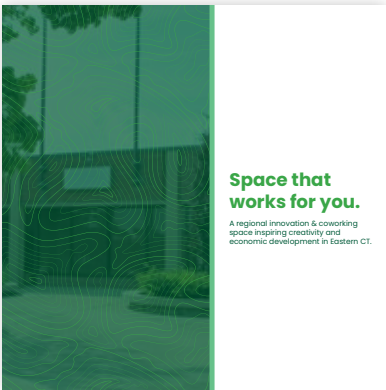
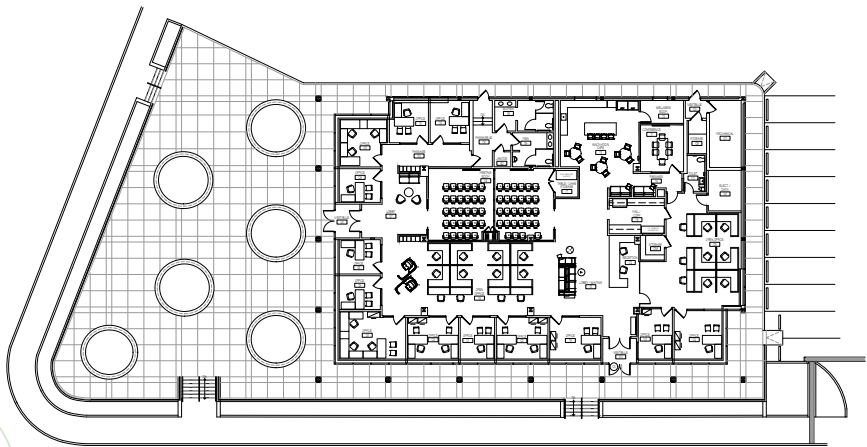


TOP INSTAGRAM POST:
Congratulations to @connecticutmagazine's Class of 2022 for making the "40 Under 40" list of rising stars! A special shoutout to Regan Miner and Dayne Rugh of the @slatermemorialmuseum in Norwich and Andrew Camacho of New London's @creativekonnection! 1. Photo Credit: Sean D. Elliot / @thedayct 2. Photo Credit: Danielle M. Fallon/BellaFoto Studios Photography

TOP LINKEDIN POST:
On Oct 26th, Sift Bake Shop celebrated the Grand Opening of their Niantic location! 25% of the day's proceeds benefited Care & Share of East Lyme who provides food, financial and emergency support to individuals and families in East Lyme, Niantic and Salem

92 Eugene O'Neill Drive, New London

In 2022, the Chamber, with the support of its Board of Directors and in partnership with the Chamber Foundation, began developing the Regional Innovation Center with the mission to provide an innovative, vibrant environment where professionals, entrepreneurs, emerging and established businesses can convene and work, and where community members can receive career-enhancing training.



Marketing materials for the capital campaign and tenant recruiting efforts.



DECD Bond

Governor Ned Lamont joined the Chamber at 92 Eugene O' Neill Drive to announce a \$1.3 Million bond from the State of Connecticut



Governor Lamont at State Bond announcement.

Building purchased May 2022

92 Eugene O'Neill Drive in downtown New London, an 8,000+ square foot professional office space with a private parking lot, located in an Enterprise and Opportunity Zone

Carlin Construction & Silver Petrucelli sign on as project management team

Business Development & Operations Manager Hired

Hired in October 2022, Joshua Posey's role focuses on developing and managing the Regional Innovation Center as well as supporting economic development for the City of New London and the region.



Chamber President Tony Sheridan signs State Bond agreement.

Launch Capital Campaign

A Capital Campaign was launched to complete renovations of the building, which has raised a combination of private, municipal, and state funds totalling over \$1.8 million.

\$1.8 Million
PLEDGED IN 2022

Approve building plans

Building plans were approved and construction/sub-contractor bids were awarded through construction manager, Carlin Construction. Renovations are slated to begin March 2023 with the center opening in the summer.



Renderings of the Regional Innovation Center.



OFFSHORE WIND

The Chamber partnered with the Greater Mystic Chamber of Commerce and Revolution Wind for a Mystic and New London Cleanup in support of International Coastal Cleanup Day on Friday September 16.

The Chamber also partnered with the Naval and Maritime Consortium and Business Network for Offshore Wind to host "Offshore Wind Drinks" networking nights at Thames Landing Oyster House, and Muddy Waters in New London.

On October 28, the Chamber hosted an Offshore Wind Update and Mini Expo to discuss the growing industry in CT. Speakers included: Ulysses Hammond, CT Port Authority; Tony Appleton, Burns & McDonnell; Kristin Kelleher, Equinor; Ray Collins, Eversource; Nicole Verdi, Ørsted



SOUTHEAST CONNECTICUT WORLD AFFAIRS COUNCIL (SECWAC)

SECWAC aims to foster an understanding of issues of foreign policy and international affairs. The Chamber provides administrative support and promotion for SECWAC.



CULTURAL COALITION

The Cultural Coalition shared the podium at the Chamber's Annual Meeting in March of 2022 to present their annual Arts & Culture Awards, recognizing organizations who best embody their core values: connect, collaborate, communicate. The 2021 honorees were Artreach of Norwich for "Outstanding Arts Organization" and Cumulus Media of New London for "Outstanding Business Supporter of Arts and Culture." The Chamber and the Coalition also partner to maintain and promote a robust online Calendar of Regional Events, or CORE, to showcase business and cultural events occurring all over our region.



EASTERN CT WORKFORCE INVESTMENT BOARD (EWIB)

The Chamber and EWIB have a collaborative partnership with the shared goal of growing eastern CT's economy through workforce-related programs. Through the partnership, a Chamber staff member, Joelle Garrett, works out of the American Job Centers' Montville office.

DOMINION ENERGY MINORITY BUSINESS GRANT

This initiative, funded by Dominion Energy Charitable Foundation, supports businesses majority owned and/or operated by underrepresented entrepreneur populations, especially serving people of color, women, and veterans. The grant helps to identify organizations that can benefit from an introduction to the Chamber's regional network and access to its many business development resources, and pay for their first membership dues.

Candy's Chapina Restaurant
New London

Dr. Martin Luther King, Jr. Scholarship Trust Fund
New London

Galvis & Company LLC
East Lyme

Mohegan Trading Post
Ledyard

Old Lyme Hardware
Old Lyme

Pop On the Block
Mystic

PortoFood Latin Cuisine
New London

Thames Landing Oyster House
New London

Treat Yourself CT
Waterford

Vivid Premier Inc.
New London

Wingman Goose Control
Lisbon



Treat Yourself CT ribbon cutting at the Crystal Mall in Waterford.

EASTERN REGIONAL TOURISM DISTRICT (ERTD)

For its third year, the Chamber of Commerce of Eastern Connecticut has been the Administrative Partner for the Eastern Regional Tourism District (ERTD). This partnership has been rewarding and challenging as the post-Covid world has transformed the tourism industry.

The Eastern Regional Tourism District experienced cultural evolution in 2022 that focused on a rebranding strategy. After months of discussion, council, and advocacy, the District created three destinations that comprise the 41-town footprint. The overall parent brand of ERTD is now Eastern Connecticut and its three destinations are Scenic Northeast, Greater New London/Norwich, and Mystic Country. The Chamber worked diligently alongside Board Members to navigate the arduous task of maintaining records, research, polls, and testimonies of the group while assisting in final votes and tallies for the renewed brand.

With the name rebranding came a fresh logo from the Connecticut Office of Tourism. The 'Find Your Vibe' campaign has been woven into the creative and digital framework of the District's marketing strategy, and 2022 provided a positive reset to the tourism industry in Connecticut.

The Regional Marketing Partnership Program was administered by the Chamber and once again, saw success in its match funding 1:1 grant cycle. The District awarded \$50,000 to tourism entities within the 41-town region. Overall, the grant program infused a total of \$100,000 in funding from private and ERTD grant funding in eastern Connecticut's tourism economy.

Other notable work that the Chamber helped ERTD accomplish during 2022 included assisting the Board of Directors with historically hard-to-fill vacancies and facilitation with re-engaging inactive Board Members. Along with accurate accounting practices, the Chamber and District received a near-perfect audit review for fiscal control.

ANNUAL EVENTS

The Chamber Foundation raises funds each year at two events: the Annual Bowl-a-Thon held in the spring and Holiday Gala in December. 2022 was the first year the Foundation held in-person events since 2019.

\$114,658
RAISED



FOUNDATION BOARD

- Lou Ziegler
Board Chair
Mohegan Tribal Housing Authority
- Mary Brown
Hartford Healthcare
- Holly DePerry
Charter Oak Federal Credit Union
- Ornet Hines
Liberty Bank
- Karen Roman
Dime Bank
- Marybeth Stanford
Bouvier Insurance
- Kristin Wainright
TCORS
- Mark Woods
M&T Bank

GRANT RECIPIENTS

Tommy Toy Fund	\$10,000
Eastern Workforce Investment Board	\$5,000
New London Youth Affairs	\$5,000
St. Vincent de Paul Place Norwich, Inc.	\$5,000
United Way of Southeastern Connecticut	\$5,000
The Last Green Valley	\$3,500
Madonna Place, Inc.	\$3,000
New London Babe Ruth League	\$2,900
Eastern CT Community Gardens Association	\$2,700
FRESH New London	\$2,700
Always Home, Inc.	\$2,500
New England Science and Sailing	\$2,500
Safe Futures, Inc.	\$2,500
Higher Edge	\$2,000
New London Homeless Hospitality Center	\$2,000
The Riverfront Children’s Center, Inc	\$2,000
Catholic Charities Diocese of Norwich Inc	\$1,500
Mystic Aquarium	\$1,500
Natchaug Hospital	\$1,500
Norwich Community Back Pack Program/ Norwich Free Academy	\$1,500
Project Oceanology	\$1,500
S.T.E.P.S, Inc.	\$1,500
The Arc Eastern Connecticut	\$1,250
High Hopes Therapeutic Riding	\$1,000
Hygienic Art Inc.	\$1,000
Niantic Children’s Museum	\$1,000
Norwich Rotary Foundation	\$1,000
Thames River Community Service, Inc	\$1,000
The Light House	\$1,000
Connecticut Humane Society	\$500

\$75,050
AWARDED

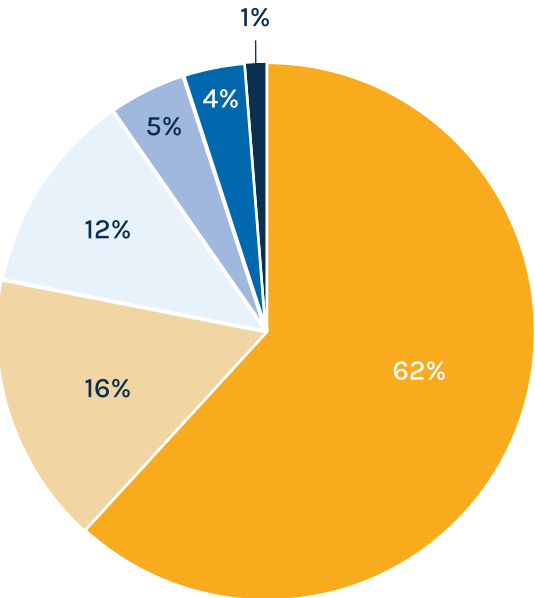


SCHOLARSHIP RECIPIENT



Sawyer Hakkinen-Hendrick
Ledyard High School ’22
Clark University
\$2,000 Awarded

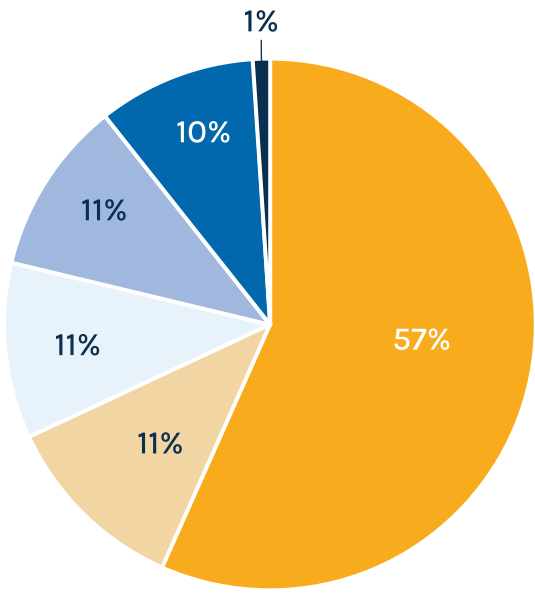
	2022*	2021	2020	2019	2018
Assets	\$2,667,485	\$836,680	\$664,589	\$442,414	\$507,474
Liabilities	\$198,565	\$193,969	\$272,797	\$160,015	\$212,910
Equity	\$2,468,920	\$642,610	\$391,792	\$282,398	\$294,564
Current Ratio	13:1	4:1	2:1	3:1	2:1



REVENUE*

Grants & Bond	\$1,583,263
Regional Benefactor Sponsorship	\$417,189
Membership Dues	\$313,582
Programs & Events	\$120,048
Partnerships	\$95,708
Advertising & Other Income	\$32,185

\$2,561,975



EXPENSES*

Operations & Administration	\$729,794
Programs & Events	\$146,937
Memberships & Marketing	\$137,637
Building & Technology	\$136,613
Professional & Admin. Fees	\$124,086
Taxes	\$13,093

\$1,288,160

Innovation Center Building Expense** \$1,067,821

* 2022 financials as presented are unaudited
**Due to the nature of the Innovation Center Capital Campaign and property acquisition, the purchase of 92 Eugene O'Neill Drive is not reflected on the ordinary Profit & Loss statement.

PAT MUNGER CONSTRUCTION

**BUILD THE BEST –
BE THE BEST**

Proudly Providing Industrial & Commercial Construction Services to Eastern Connecticut

YOUR PIPELINE TO SUCCESS

Eastern CT Manufacturing Pipeline
Provides no-cost training to address the hiring needs of Electric Boat (EB), members of the Eastern Advanced Manufacturing Alliance (EAMA), and other manufacturers. For job seekers, it provides several options: short-term classroom training, online manufacturing training, and job search assistance. This program is free to trainees and designed for unemployed and under-employed individuals.

Youth Manufacturing Pipeline Initiative
Building upon the MPI, the YMPI will raise the baseline of our labor force’s competencies while aligning those skills to in-demand needs. The program aims to increase the availability of a manufacturing talent pool through the creation of a manufacturing-based career pathway for high school students after graduation.

To learn more visit **EWIB.org**.

Making IT Make Sense

DYNAMIC ALLIANCE
12 Douglas Lane, Suite 4, Waterford, CT 06385
860.701.0058
dynamic-alliance.com

Managed IT Security IT Help Desk Services Network Design & Security Hardware/Software Support

Thank You

A special thank you to our Regional Benefactors who contribute significantly to programs in support of the small business community.



Mashantucket Pequot
Tribal Nation



FOXWOODS
RESORT + CASINO
THE Wander OF IT ALL

Foxwoods is honored to support the efforts of the
Chamber of Commerce of Eastern Connecticut.



CHAMBER of COMMERCE
EASTERN CONNECTICUT

Connect with your Regional Chamber of Commerce

Gain instant access to community
contacts, potential customers, and
a host of practical resources that
support your big dreams.

ChamberECT.com/join



NPU has been part of the Norwich
community since 1904. We are proud
to meet the needs of our customers –
every minute of every day of the year.



Our mission is to make Norwich
a better place to live, work and
do business.

www.norwichpublicutilities.com



Dedication *plus*,
commitment.

We join with the Chamber and
our community in celebrating
the achievements of tonight's
honorees.

coreplus.org
860.886.0576



Robinson+Cole

We are incredibly proud to be recognized as the
**Chamber of Commerce of Eastern Connecticut's
2023 Business of the Year** and acknowledge
our lawyers and professional staff who bring their
very best to work each and every day.

Robinson+Cole is an AmLaw 200 law firm established over 178 years ago, with a deeply-rooted culture of
collaboration, civility, and inclusion.

Contact: Rhonda J. Tobin | rtobin@rc.com | 860.275.8327

www.rc.com

Boston | Hartford | New York | Washington, DC | Providence | Miami | Stamford | Wilmington | Philadelphia | Los Angeles | Albany

© 2023 Robinson & Cole LLP | Attorney Advertising

REGIONAL BENEFACTORS

The Chamber's Regional Benefactors contribute over and above the standard membership dues structure to support important programs produced annually for the small businesses and nonprofits of the region. These community-oriented companies are committed to responsible economic growth, leadership development, job creation, and bringing our regional voice to Hartford and beyond.

