



CHAMBER *of* COMMERCE  
EASTERN CONNECTICUT

---

# 20 ANNUAL 23 REPORT

Dear Chamber Members,

2023 has been a year of expansion, adaptation, and accomplishment for the Chamber. The Chamber offices moved from Waterford to New London and officially launched our Regional Innovation Center, where we can now offer a modern collaborative workspace where small businesses, entrepreneurs, startups, and resources can co-exist under one roof.

The new center includes flex workspaces, 12 private offices, two meeting rooms, as well as common space amenities, including a café, wellness room, and the most advanced high-speed internet service available. The Chamber and its Foundation jointly organized a Capital Campaign to support the purchase and renovation of the building, with temporary financing secured in a unique partnership between Chelsea Groton Bank, Dime Bank, and Charter Oak Federal Credit Union. We are immensely grateful for the contributions from chamber members which, matched by funding from the Department of Economic Community Development (DECD) and City of New London, completed our successful campaign.

The official grand opening took place on October 26, 2023, with over 250 members and guests coming together to view this transformational regional offering. I am pleased to report that, as of writing, 80% of the building is occupied, and the Center is bustling.

This momentous accomplishment occurred while still producing a robust program and event schedule, from networking events to keynote speaker series and more. Additionally, our dedicated team recruited nearly 100 new members, provided administrative support for the Eastern Regional Tourism District and Southeastern Connecticut World Affairs Council, and organized numerous ribbon cuttings. We were also honored to host our 72nd Citizen of the Year celebration honoring Chief Lynn Malerba, who serves as Chief of the Mohegan Tribe and the first Native American Treasurer of the United States.

The Chamber Foundation, our 501(c)(3), continued its hard work raising funds for programs that enhance and enrich education and economic opportunities in eastern Connecticut, especially those for children and families. As you will see in this report, the mission remains strong as the Foundation proudly awarded 30 organizations and six scholarships in 2023.

Supporting the business community since 1910 is our core mission. We have a network of approximately 1,400 members, encompassing diverse organizations including major corporations, sole proprietors, and civic organizations, spanning 42 towns in eastern Connecticut and beyond. We are immensely proud of the work we do in support of our members and the region. Together with the establishment of our Innovation Center, we have set the Chamber on a new and exciting course which would not have been possible without our dedicated membership, our Board of Directors, our Regional Benefactors, and our hard-working committed staff.



**Tony Sheridan**  
President and CEO



**Mary Ellen Jukoski**  
Board Chair

4	Membership
6	Workforce Development
8	Advocacy + Tourism
10	Community
14	Regional Innovation Center
16	Chamber Foundation
18	Financials
19	Staff + Board of Directors



2023 was a great year for membership. The Chamber saw an increase in new members while renewals remained strong.

88%

of our members are small businesses  
(employing 100 or fewer people)

Our membership employs

98,000+

people in Connecticut & beyond

1 New Regional Benefactor



Regional Benefactors support the Chamber above and beyond basic membership dues to bolster our efforts in economic development and community engagement. Founded in 1929 to gather and preserve the rapidly disappearing artifacts of America's seafaring past, Mystic Seaport Museum has grown to become a national center for research and education and the nation's leading maritime museum. As such, it is a cornerstone of southeastern Connecticut's tourism and an important local employer, and as a result, is an economic driver for our state.

Top 5 Member Industries

EXISTING MEMBERS

- 1. Finance & Insurance
- 2. Family, Community, & Civic Organizations
- 3. Health & Wellness
- 4. Food & Beverage
- 5. Shopping & Retail

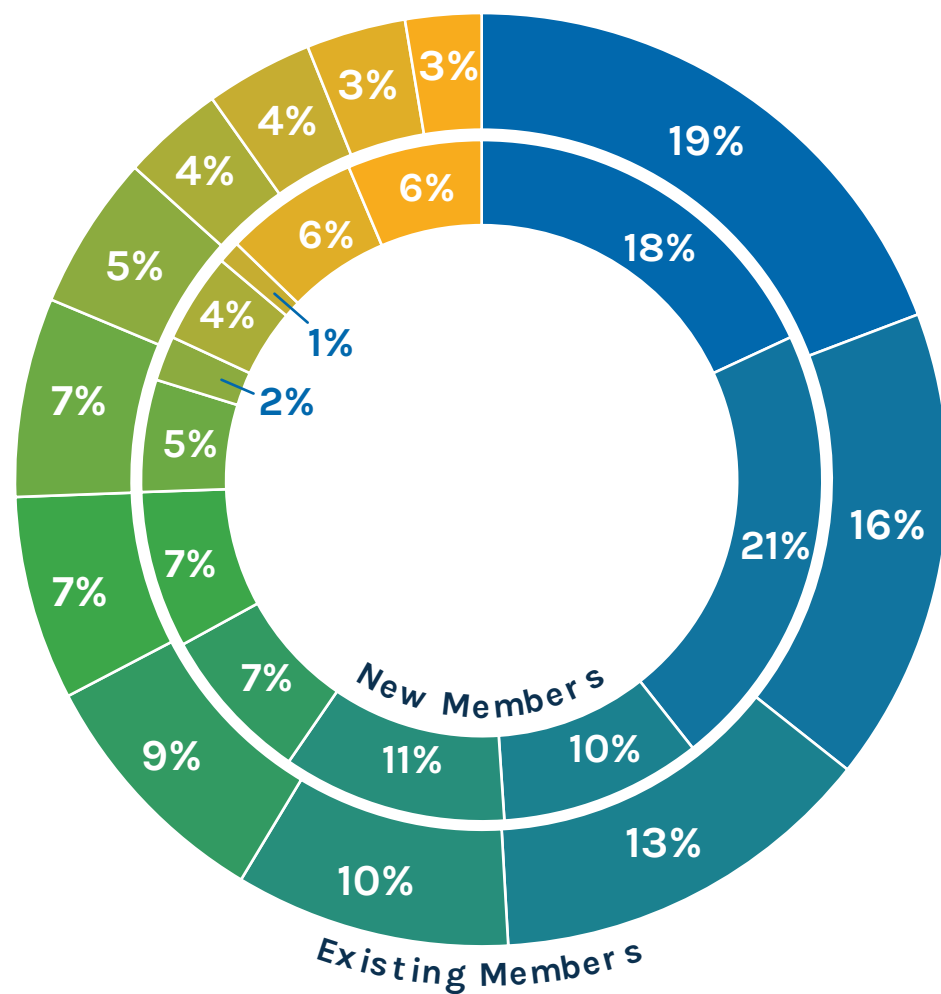
NEW MEMBERS

- 1. Food & Beverage
- 2. Family, Community, & Civic Organizations
- 3. Shopping & Retail
- 4. Health & Wellness
- 5. Construction & Contractors
- 5. Personal Services & Care

14 Chamber Ambassadors

- |                   |                 |
|-------------------|-----------------|
| Bridget K. Brown  | Ornet Hines     |
| Dale Bunn         | Phil Jones      |
| Angela Clay       | Eunice Lima     |
| Nicole Cruz       | Jessica Linicus |
| Gary Decker       | Rick Mattson    |
| Mary DePasquale   | John C. Parker  |
| Heather Ford-Bunn | Sandra Sharr    |

## MEMBERSHIP BY REGION



Region	Existing	New
● Groton, Mystic, or Stonington	19%	18%
● New London	16%	21%
● Norwich or Greater Norwich	13%	10%
● Waterford	10%	11%
● East Lyme, Old Lyme, or Lyme	9%	7%
● Hartford County	7%	7%
● Ledyard, Mashantucket, or North Stonington	7%	5%
● Colchester, Salem, and Montville	5%	2%
● Windham County	4%	4%
● CT Counties: Tolland, New Haven, Fairfield	4%	1%
● Middlesex County	3%	6%
● RI, MA, NY, or Other States	3%	6%

DOMINION ENERGY  
MINORITY BUSINESS  
GRANT

This Dominion Energy Charitable Foundation-funded initiative aids underrepresented entrepreneurs, prioritizing people of color, women, and veterans. It facilitates networking, grants access to business development resources, and covers initial membership dues for qualifying businesses.

**2023 Recipients:**

Bounce World  
 Poquonnock Plains Urban Farm  
 Puerto Lima Farm to Bowl Restaurant  
 The Gallery Selfie Museum  
 Rum Tropic Distillery  
 Sweet Momma's Bakery  
 Favorites Bistro & Bar  
 The Golden Owl  
 Beyond a Salon  
 Dream In Color Marketing  
 Flavours of Life  
 Su & Sa Sushi and Salad  
 MBC Bookkeeping  
 Comfort Catering  
 CJ Peruvian Restaurant  
 Twisted Sugar Cake Design and Bakery

## LEADERSHIP EASTERN CT CLASS OF 2023

For more than three decades, Leadership Eastern CT has been preparing future community leaders to tackle the region’s challenges with responsibility and vision.

In 2022, the program’s participants embarked on a significant project: enhancing the landscape of Waterford Country School’s campus, just in time for their Centennial Celebration. This endeavor included fundraising and construction of a brand new pavilion, a testament to the dedication and hard work of the class of 2023.

### Class of 2023

Daniel Adams, *Adams Wealth Management*

Phylicia Adams, *Corporation for Supportive Housing CT*

Andrea Barron, *Dime Bank*

Krissa Beene, *Chelsea Groton Bank*

Toni Berlandy, *Eversource*

Justine Deluca, *Reliance Health Inc*

Deb Denfeld, *Fuss & O’Neill*

Dan Desrochers, *Foxwoods Resort Casino; Class Co-President*

Darlene Goldstein, *Garvey, Steele & Bancroft LLP*

Heshima Harris, *Foxwoods Resort Casino*

Carolina Hernandez, *Charter Oak Federal Credit Union*

Peter Hoey, *Mohegan Tribe*

Margaret Job, *CMEEC*

Andrew Lavigne, *Connecticut Port Authority*

Liz LeGary, *UCFS Healthcare*

Molly Martony, *Mystic Aquarium*

Brandon McIntyre, *Foxwoods Resort Casino*

Cynthia Palmer, *Dime Bank*

Annah Perch, *New London Homeless Hospitality Center*

Jennifer Rowland, *Dominion Energy*

Eric Savery, *Dominion Energy*

Rebecca Shea, *Mystic Seaport Museum*

Cassie Shewbridge, *Charter Oak Federal Credit Union*

Liz Tullo, *Pat Munger Construction Company*

Kyle Verrette, *CorePlus Federal Credit Union*

John Vincent, *Charter Oak Federal Credit Union*

Karen Walters, *Pfizer; Class Co-President*

Marielle Winkelman, *Chelsea Groton Bank*

Joe Zuzel, *Hartford Health Care*



Leadership class of 2023 graduation.

## EASTERN CT WORKFORCE INVESTMENT BOARD (EWIB)

Through a collaborative partnership with EWIB, the Chamber of Commerce staffs a workforce development role in the American Job Center, which is comprised of over 40 partner agencies. Chamber staff member Joelle Garrett provides hiring and recruitment services to businesses throughout the region with a specific focus on healthcare and manufacturing pipelines. Job seeking customers are marketed to businesses with a hiring incentive once they complete trainings in these industries. Employers in the region have access to many services including free recruitments at the American Job Center and use of CTHires, the state's job board system. **Since the beginning of 2024, over 100 employers and close to 500 job seekers have been served through this partnership.**



Dr. Tracy Espy, President of Mitchell College speaks to Women in Leadership Business Luncheon attendees, as Maria Miranda of Miranda Creative looks on.

## YOUNG PROFESSIONALS

Young Professionals of Eastern CT, targeted to early-career professionals generally 40 and under, has been designed to offer flexible opportunities to engage professionally, connect socially, and build a lasting network.

Tips from the Top conversations allow members to meet and chat casually with top executives from the region, such as Dr. Tracy Espy President of Mitchell College.

## Program & Event Highlights

### Business Breakfast: Employee Engagement & Creating Workplace Magnetism

- **Kawel LauBach, M.A., HR & OD Practice Leader and Executive Coach, The Human Resource Consortium, LLC**
- **Dale Merrill, Senior Vice President, HR & Administration, Mashatucket Pequot Tribal Nation/Foxwoods Resort Casino**
- **Jennifer Bevaqua, SPHR, SHRM-SCP, Vice President of People, UCFS Healthcare**
- **Katie Russo, Corporate Director of Human Resources, Waterford Hotel Group**

### Tips from the Top with Dr. Tracy Espy

### Chamber of Commerce of Eastern CT Career Pathway Expo

The Career Pathway Expo offered local high school students insights into diverse career pathways, emphasizing the educational, training, and skill requirements essential for success in respective fields.

### Leadership Eastern CT Class of 2023 Graduation

### Business Luncheon: Women in Leadership

- **Alexandra Daum former Commissioner of CT DECD**
- **Dr. Tracy Espy, President, Mitchell College**
- **Nicole Verdi, Head of Government Affairs & Policy, Ørsted Americas**
- **Maria Miranda, Creative Director, Miranda Creative**
- **Dr. Mary Ellen Jukoski, President, CT State Three Rivers Community College**

## EASTERN REGIONAL TOURISM DISTRICT (ERTD)

The Chamber is proud to be the Administrative Partner of the Eastern Regional Tourism District, one of three districts established and funded by the State of Connecticut to market regional tourism opportunities.

In 2023, ERTD again offered its Regional Marketing Partnership Program and granted \$70,000 to 15 collaborative projects across the District’s footprint. This public infusion was matched by \$88,565 in private funds. Funding benefited branding campaigns, festivals, historic landmarks, brochures and guides, speakers series, hiking and biking facilities, and overall interconnection between tourism assets in eastern Connecticut’s portfolio.

In accordance with the state’s fiscal year, election of officers was held at the fourth quarter Board of Directors meeting, with Chris Regan of Olde Mistick Village assuming the role of Chair July 1, 2023, succeeding Jim Bellano of the Town of Windham. The Chamber was also very proud to facilitate a perfect audit for FY23.

Eastern Connecticut was well-represented at key industry gatherings, with a designee sharing information and insights at Travel & Adventure Trade Show in Chicago and ABA Marketplace 2023 in Detroit. ERTD also attended consumer focused festivals including The Big E in Springfield, the Mystic Outdoor Art Festival, and The Woodstock Fair.

The agency also underwent a significant change, rebranding its 41-town territory from “Mystic Country” into three distinct regions: Mystic Country, Greater New London/Norwich, and Scenic Northeast, to better represent the unique offerings of each community.

The end of the year brought us bittersweet news: Rachel Lenda, who served as the Administrative Partnerships Manager at the Chamber, announced that she would be leaving to serve as the Governor-appointed Director of the Connecticut Office of Tourism beginning in January 2024.



U.S. Senator Chris Murphy speaks to members at a Business Luncheon.

## LEGISLATIVE AFFAIRS COUNCIL

Committee members meet to discuss legislative needs and proposals of concern to the region and the membership. The Chamber monitors state and federal bills through a powerful software tool, and reports updates and opportunities to mobilize in support or opposition.

### 2023 Council Chairs:

Stan Mickus, Cross Sound Ferry  
Charles Bunnell, The Mohegan Tribe

## Program & Event Highlights

- **Business Luncheon with U.S. Senator Chris Murphy**
- **State of Mystic, Stonington, and Groton**
- **Business Luncheon with U.S. Senator Richard Blumenthal**
- **New London: Dare to Believe Economic Development Forum**





In 2023, the Chamber made significant community impact strides, from honoring outstanding members with regional awards to championing local businesses through initiatives like Shop Local and collaborating closely with community partners.

**25**  
Ribbon  
Cuttings

**22**  
Networking  
Events

**34**  
Award  
Recipients

**4,000 +**  
Event  
Attendees

NL Eats celebrated their grand opening in New London with a ribbon cutting.



## Award Winners

### 2022 REGIONAL CHAMBER AWARDS

**Small Business of the Year:**  
Flanders Fish

**New Business Award:**  
The Barn

**Industry Innovator:**  
Gilman Brothers Company

**Community Revitalization Award:**  
Veterans Rally Point (Easterseals)

**NonProfit of the Year:**  
S.T.E.P.S

**Tourism Leader of the Year:**  
Olde Mistick Village

**Best Place to Work:**  
Dime Bank

**Business of the Year:**  
Robinson + Cole

**Volunteer of the Year:**  
Dara Wicken  
Angie Clay

**Young Professionals of the Year:**  
Jessica Talerico

**Board of Directors Special Award:**  
Alwyn Christy, Lighthouse Inn

### MILITARY APPRECIATION BREAKFAST

**Military Community Support Award:**  
Navy Federal Credit Union  
Pfizer



Specialist Mariana Gomes - Borges USARMY NG CTARNG receives the December Service Person of the Month award.

### SOCIAL SERVICE RECOGNITION BREAKFAST

**Board Member of the Year:**  
Dr. Karen Walters, Pfizer, Inc.

**Executive Director of the Year:**  
Stacey Lawton, SCADD

**Staff Member of the Year:**  
Anne Scribner, Reliance Health

**Volunteer of the Year:**  
Melissa Yuchniuk, Bouvier Insurance

**Collaboration of the Year:**  
Easterseals Capital Region &  
Eastern Connecticut, Ability Media &  
Comcast NBCUniversal

### SERVICE PERSON OF THE MONTH

STS1 Dakota L. Spahr of Naval  
Submarine Base New London

Kerry E. Doris, ME3 USCG

Staff Sergeant Sibley of HHD 1109  
TASMG

Matthew Holt, MMA, PCU IOWA SSN  
797

David F. Rojo CSS3, USN\*\*Picture  
SPOM1\*\*

TM2 Jeffery Mason, USN

STS1 Cody Kulhanek of U.S. Naval  
Submarine School

(MMN1) Kevin Willy, Historic Ship  
Nautilus and Submarine Force  
Museum

MU1 Robert Durie of the United States  
Coast Guard Band

ITS2 Scott Middleton of the USS  
INDIANA (SSN 789)

HM1 Nicholas Highers of Navy  
Medicine Readiness and Training  
Unit in Groton

Specialist Mariana Gomes - Borges  
USARMY NG CTARNG

### 2022 SERVICE PERSON OF THE YEAR

Gabriel William Muscella, MMN1,  
Naval Submarine School, Groton, CT



Guests celebrate the Social Service Recognition Breakfast award winners.



Chief Lynn Malerba, U.S. Treasurer, poses with Senator Richard Blumenthal at her 72nd Citizen of the Year Celebration.

## 72<sup>nd</sup> Citizen of the Year Chief Lynn Malerba

On May 23rd, we celebrated our 72nd Annual Citizen of the year, Chief Many Hearts Lynn Malerba, Treasurer of the United States and the 18th Chief of the Mohegan Tribe. Over 400 members gathered to celebrate, enjoying an evening of good company, heart-felt presentations, and creative culinary delights surrounded by thematic ambiance at Mohegan Sun.



## Supporting Local

### SHOP SMALL

During the holiday season, the Chamber spotlighted member businesses with images and write-ups, as part of the nationwide “Shop Small” campaign.

**18.2K**  
organic  
impressions

**10**  
featured  
businesses



### SPENT LOCAL STAYS LOCAL

“Spent Local, Stays Local” urges the community to ‘support the businesses that support you.’ We showcased our members digitally on Facebook and Instagram, as well as in print through The Day newspaper.

**28.2K**  
impressions



In 2023 Facebook page visits increased by **280%**

## Community Partners

### CULTURAL COALITION

The Cultural Coalition joined the Chamber’s Annual Meeting in 2023 to present their Arts & Culture Awards, honoring Mashantucket Pequot Museum & Research Center and Women’s Business Development Council. Additionally, the Chamber and the Coalition collaborate on CORE, an online calendar highlighting regional business and cultural events.

### CT SBDC

The Chamber partners with CT SBDC in eastern CT to offer professional, confidential, and expert business advice for business owners to overcome challenges and reach their goals. SBDC has free resources, tools, and online trainings to offer business help along the way.

### CITY OF NEW LONDON

In a unique public-private partnership, City of New London joined the Chamber in sponsoring a new position, designed to participate in the City’s Economic Development Department and support activities to attract and retain city-center businesses, as well as manage the Chamber’s new downtown Innovation Center. The position greeted and counseled small businesses, promoted available tools and resources from both the City and the Chamber, analyzed retail and real estate opportunities, and supported community events.

### SOUTHEAST CONNECTICUT WORLD AFFAIRS COUNCIL (SECWAC)

SECWAC aims to foster an understanding of issues of foreign policy and international affairs. The Chamber provides administrative support and promotion for SECWAC.

In 2023, the Chamber's multi-year efforts surrounding the Regional Innovation Center culminated in a grand opening ceremony on October 26.

Joined by over 250 community members, founding partners, and officials, Tony Sheridan, President and CEO, cut the Chamber's own ceremonial ribbon to open the Innovation Center for business, including private office spaces, co-working, and meeting facilities.

The mission of the Innovation Center is to provide an innovative environment where professionals, entrepreneurs,

emerging and established businesses can convene and work, and community members can receive career enhancing training. The 8,300 square foot Innovation Center is positioned

as a gateway to New London's downtown, and offers walkable access to the region's transportation hub, including

bus, rail, and ferry services. Proximity to City offices, downtown retail and restaurants, and the future US Coast Guard Museum further solidified the Chamber's choice to co-locate its office with the Innovation Center, enhancing its community vibrancy and responsive on-site management.

**Regional  
Innovation Center**  
at CHAMBER of COMMERCE  
EASTERN CONNECTICUT

## CAPITAL CAMPAIGN

For the first time, the Chamber embarked on a Capital Campaign to support the purchase and renovation of the formerly vacant Merrill Lynch building on Eugene O'Neill Drive. The campaign raised approximately \$3M from the public and private sectors, additionally bolstered by in-kind services from regional partners.

### Donor List:

State of Connecticut  
Department of Economic and Community Development  
Chelsea Groton Bank Foundation  
Comcast  
City of New London  
Foxwoods / Mashantucket Pequot Tribe  
Charter Oak Federal Credit Union  
Eversource Foundation  
Mohegan Sun / Mohegan Tribe  
Dominion Energy Charitable Foundation  
Mystic Aquarium  
Pfizer  
Revolution Wind  
Liberty Bank  
Connecticare

### MARCH

**Construction Begins**

### JUNE

**Certificate of Occupancy Received**

### JULY

**Chamber Moves-In!**

### AUGUST

**Comcast Business enhances Center Technology, including blazing fast internet**

**ChamberECT.com/ic @WorkAt92NL launched**

**First Use of Meeting Space**

### SEPTEMBER

**New Furniture Delivered**

### OCTOBER

**Grand Opening & Ribbon Cutting** ✨

More than 250 local officials, business owners and community members gathered at the Innovation Center to celebrate the grand opening and ribbon cutting.



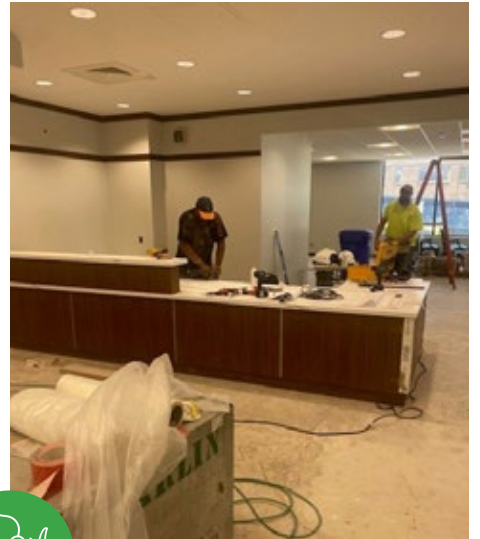
### NOVEMBER

**First Office Tenants Move In**

### DECEMBER

**Neighborhood Assistance Act Application Successful**

**Did you know: The Chamber of Commerce of Eastern Connecticut, Inc. traces its history to the New London Businessmen's Association founded in 1910!**



# \$101,190

Awarded in grants  
and scholarships

## Grant Recipients

Tommy Toy Fund	\$15,000	SARAH Inc.	\$1,700
Eastern Workforce Investment Board	\$5,000	Riverfront Children's Center	\$1,540
Goodspeed Musicals	\$5,000	Catholic Charities, Diocese of Norwich, Inc.	\$1,500
St. Vincent de Paul Place Norwich, Inc.	\$5,000	Eastern Connecticut Community Gardens Association	\$1,500
United Community and Family Services	\$5,000	Norwich Youth, Family, & Recreation Services	\$1,500
United Way of Southeastern Connecticut	\$5,000	S.T.E.P.S., Inc.	\$1,500
High Hopes Therapeutic Riding, Inc.	\$3,000	Sea Research Foundation, Inc./ Mystic Aquarium	\$1,500
Madonna Place, Inc.	\$3,000	Yellow Farmhouse Education Center	\$1,500
Safe Futures, Inc.	\$3,000	Niantic Children's Museum	\$1,000
Aways Home	\$3,000	Connecticut Storytelling Center	\$1,000
FRESH New London	\$2,500	Eastern Connecticut Ballet	\$1,000
New London Homeless Hospitality Center	\$2,500	Girls on the Run of Southeastern CT	\$1,000
Thames Valley Council for Community Action, Inc.	\$2,500	Norwich Bully Busters	\$1,000
South East CT Community Center of the Blind	\$2,400	Norwich Rotary Foundation	\$1,000
Higher Edge	\$2,000	Thames River Community Service, Inc.	\$1,000
Our Piece of the Pie, Inc.	\$2,000	The Maurice C. La Grua Center, Inc.	\$1,000
Public Library of New London	\$2,000	Jewish Federation of Eastern Connecticut	\$500
The Covenant Shelter of New London, Inc.	\$1,800		
Kings of the Diamond	\$1,750		

**\$92,190**  
Awarded

## Scholarship Recipients

The Chamber of Commerce of Eastern CT Foundation awarded \$1,500 scholarships to six 2023 high school graduates in the region, prioritizing those committed to future career contributions in Eastern CT, with a track record of community engagement and financial need.

**\$9,000**  
Awarded

**Emily Bergamo**, Bay Path University

**Diya Patel**, Dartmouth College

**Meggan Coronel**, UCONN

**Camryn Hobbs**, UCONN Avery Point

**Ariana Peters**, University of New Haven

**Genevieve Mitchell**, University of Hartford



## Foundation Board

Lou Ziegler  
Board Chair  
Mohegan Tribal Housing Authority

Holly DePerry  
Charter Oak Federal Credit Union

Katherine Ericson  
LEARN

Megan Gilbert  
Chamber of Commerce of Eastern CT

Ornet Hines  
Liberty Bank

Mary Ellen Jukoski  
CT State, Three Rivers

Karen Roman  
Dime Bank

Kristin Wainright  
TCORS

Mark Woods  
M&T Bank

Melissa Yuchniuk  
Bouvier Insurance



Scholarship recipient Ariana Peters



Scholarship recipient Emily Bergamo



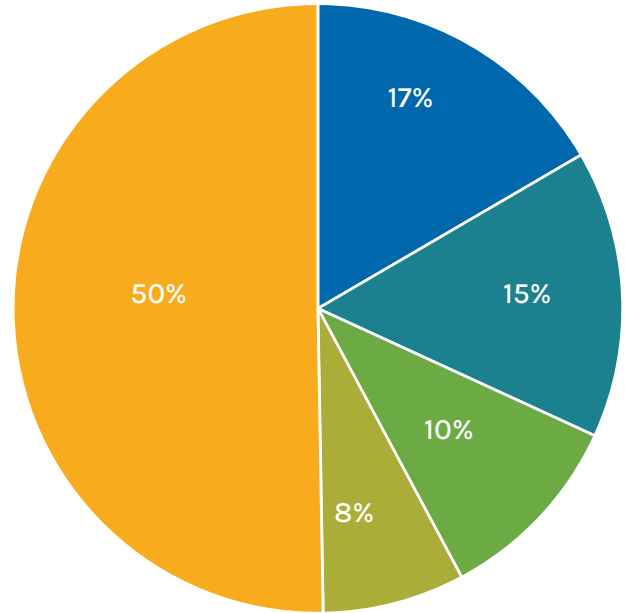
The Chamber Foundation raises funds each year at two events: the Annual Bowl-a-Thon held in the spring and Holiday Gala, pictured above, in December.

	2023*	2022	2021	2020	2019
<b>Assets</b>	\$1,557,174	\$2,667,485	\$836,680	\$664,589	\$442,414
<b>Liabilities</b>	\$558,763	\$198,565	\$193,969	\$272,797	\$160,015
<b>Equity</b>	\$998,411	\$2,468,920	\$642,610	\$391,792	\$282,398
<b>Current Ratio</b>	3:1	13:1	4:1	2:1	3:1

### Revenue\*

● Programs & Events	\$350,193
● Membership Dues	\$322,049
● Partnerships & Grants	\$217,896
● Ads, Affinities, & Other Income	\$159,254
● Innovation Center (inc. Capital Campaign)	\$1,061,002

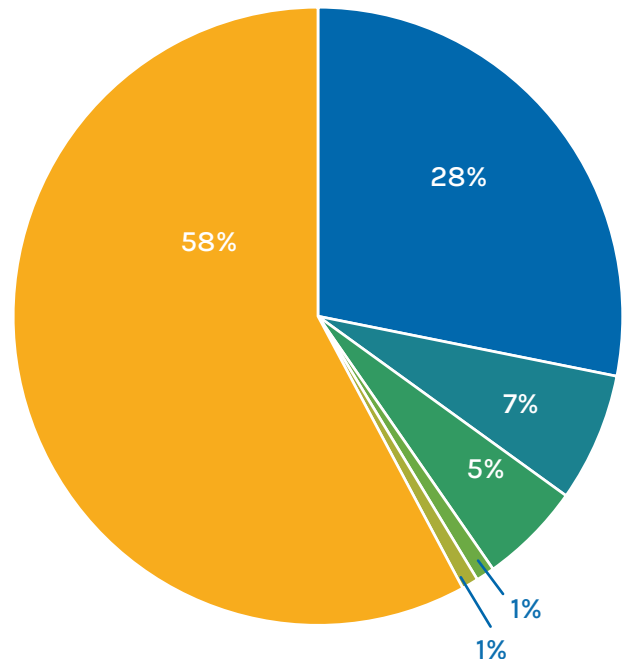
**\$2,110,394**



### Expenses\*

● Operations, inc. Personnel	\$790,689
● General, inc. Events	\$189,834
● Office and Technology	\$151,736
● Professional & Admin. Fees	\$27,601
● Taxes	\$24,763
● Innovation Center (inc. Renovation)	\$1,627,985

**\$2,812,608**



\*The 2023 financials as presented are unaudited.

## 2023 Board of Directors

---

### CHAIR

Dr. Mary Ellen Jukoski  
CT State Three Rivers Community  
College

Tai Au  
Pink Basil, Spice Club, Samurai  
Noodle Bar + Grill

Donna Handley  
Backus and Windham Hospitals/  
Hartford HealthCare

### VICE CHAIR

Marguerite Driscoll  
Pfizer, Inc.

Michael Ausere  
Eversource

Anna Lathrop  
Gourmet Galley Catering & GG at  
Home

### VICE CHAIR

Anthony Joyce  
Chelsea Groton Bank

Blair Bendel  
Foxwoods Resort Casino

Dave Meisinger  
Connecticut Municipal Electric  
Energy Company (CMEEC)

### TREASURER

Heather Roberts  
Diamond Team at Norcom Mortgage

Eric Callahan  
Suisman Shapiro Attorneys-at-Law

Dan McFadden  
General Dynamics Electric Boat

### SECRETARY

Jeffrey Godley  
Brown Jacobsen, P.C.

Tina Couch  
Mystic Aquarium

Brian Orenstein  
Charter Oak Federal Credit Union

### PRESIDENT

Tony Sheridan  
Chamber of Commerce of Eastern CT

Laurie Finan  
Century 21 Shutters & Sails

Nicole Verdi  
Ørsted North America

Lou Ziegler  
Chamber Foundation/Mohegan  
Tribal Housing Authority

## Staff

---

Tony Sheridan  
President and CEO

Jane Davis  
Director of Membership &  
Engagement

Amanda Morin  
Program & Event Manager

Megan Gilbert  
Vice President

Kathryn Flannigan  
Marketing & Event Coordinator

Lori Thompson  
Office Manager

Ciera Alston  
Administrative Assistant

Joelle Garrett  
Business Services Representative

Emily Brannigan Wilkins  
Creative Manager

Andrea Manning  
Administrative Partnerships Manager

**Thank you Tsering Dolma,**  
our summer 2023 intern who  
worked with us during our  
move to New London!

## Regional Benefactors

The Chamber's Regional Benefactors contribute over and above the standard membership dues structure to support important programs produced annually for the small businesses and nonprofits of the region. These community-oriented companies are committed to responsible economic growth, leadership development, job creation, and bringing our regional voice to Hartford and beyond.

